

永磁直流齿轮减速电机 PM DC Spur Gear Motor

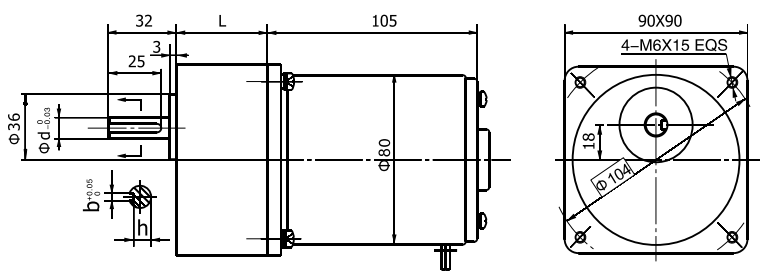
90JB200K/80ZY100

允许转矩范围: 20N.m
Permissible Load Range: 20N.m

● 外形和安装尺寸 Dimensions

减速器出轴分两种类型 Reducer Output Shaft Configuration

- (1) 常规配置: 直径d=15, 键槽b=5、h=12
- (2) 可选配: 直径d=12, 键槽b=4、h=9.5
- (1) Standard Configuration: Diameter d=15, Keyway b=5、h=12
- (2) Optional: Diameter d=12, Keyway b=4、h=9.5



● 电动机主要技术参数 Motor Technical Data

电机型号 Type	额定电压 Rated voltage VDC	空载转速 No-load speed r/min	空载电流 No-load current A	额定转速 Rated speed r/min	额定转矩 Rated torque N.m	输出功率 Output power W	额定电流 Rated current A	堵转转矩 Stall torque N.m	堵转电流 Stall current A
80ZY100-2420	24	2000	0.4	1700	0.25	45	3.0	1.5	16
80ZY100-2430	24	3000	0.5	2600	0.30	80	5.0	1.8	22

● 齿轮减速电机主要技术参数 Gear Motor Technical Data

配置80ZY100-2420直流电机 (80ZY100-2420 DC Motor)

减速比 Reduction ratio	3	5	7.5	10	12.5	15	25	30	50	75	100
减速级数 Number of gear trains	1	2	2	2	2	2	3	3	4	4	4
减速器长度(L) Length(L)	mm	42	42	42	42	42	60	60	60	60	60
空载转速 No-load speed	r/min	667	400	267	200	160	133	80	67	40	27
额定转速 Rated speed	r/min	567	340	227	170	136	113	68	57	34	23
额定转矩 Rated torque	N.m	0.68	1.1	1.5	2.0	2.5	3.0	4.6	5.5	9.1	12
最大瞬间允许负载 Max. permissible load in a short time	N.m	5.0	10	10	10	10	10	20	20	40	40
转向 Direction of rotation		CCW	CW	CW	CW	CW	CW	CCW	CCW	CW	CW

配置80ZY100-2430直流电机 (80ZY100-2430 DC Motor)

减速比 Reduction ratio	3	5	7.5	10	12.5	15	25	30	50	75	100
减速级数 Number of gear trains	1	2	2	2	2	2	3	3	4	4	4
减速器长度(L) Length(L)	mm	42	42	42	42	42	60	60	60	60	60
空载转速 No-load speed	r/min	1000	600	400	300	240	200	120	100	60	40
额定转速 Rated speed	r/min	867	520	347	260	208	173	104	87	52	35
额定转矩 Rated torque	N.m	0.81	1.2	1.8	2.4	3.0	3.6	5.5	6.6	10	15
最大瞬间允许负载 Max. permissible load in a short time	N.m	5.0	10	10	10	10	10	20	20	40	40
转向 Direction of rotation		CCW	CW	CW	CW	CW	CW	CCW	CCW	CW	CW