

# 永磁直流齿轮减速电机 PM DC Spur Gear Motor

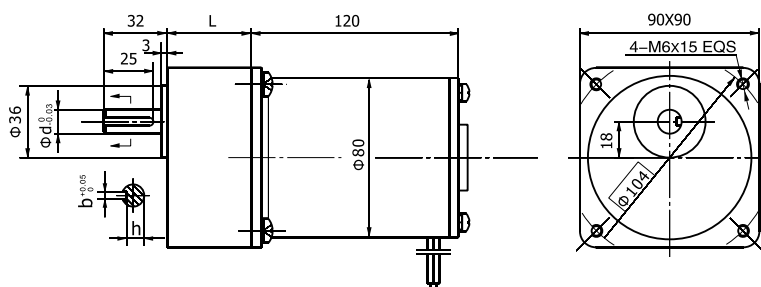
## 90JB200K/80ZY115

允许转矩范围: 20N.m  
Permissible Load Range: 20N.m

### ● 外形和安装尺寸 Dimensions

减速器出轴分两种类型 Reducer Output Shaft Configuration

- (1) 常规配置: 直径d=15, 键槽b=5、h=12
- (2) 可选配: 直径d=12, 键槽b=4、h=9.5
- (1) Standard Configuration: Diameter d=15, Keyway b=5、h=12
- (2) Optional: Diameter d=12, Keyway b=4、h=9.5



### ● 电动机主要技术参数 Motor Technical Data

| 电机型号<br>Type | 额定电压<br>Rated voltage<br>VDC | 空载转速<br>No-load speed<br>r/min | 空载电流<br>No-load current<br>A | 额定转速<br>Rated speed<br>r/min | 额定转矩<br>Rated torque<br>N.m | 输出功率<br>Output power<br>W | 额定电流<br>Rated current<br>A | 堵转转矩<br>Stall torque<br>N.m | 堵转电流<br>Stall current<br>A |
|--------------|------------------------------|--------------------------------|------------------------------|------------------------------|-----------------------------|---------------------------|----------------------------|-----------------------------|----------------------------|
| 80ZY115-2420 | 24                           | 2000                           | 0.3                          | 1700                         | 0.32                        | 57                        | 3.5                        | 1.5                         | 16                         |
| 80ZY115-2430 | 24                           | 3000                           | 0.5                          | 2600                         | 0.44                        | 120                       | 7.5                        | 2.0                         | 33                         |

### ● 齿轮减速电机主要技术参数 Gear Motor Technical Data

配置80ZY115-2420直流电机 (80ZY115-2420 DC Motor)

| 减速比<br>Reduction ratio                                   | 3    | 5   | 7.5 | 10  | 12.5 | 15  | 25  | 30  | 50 | 75 |
|--|------|-----|-----|-----|------|-----|-----|-----|----|----|
| 减速级数<br>Number of gear trains                            | 1    | 2   | 2   | 2   | 2    | 2   | 3   | 3   | 4  | 4  |
| 减速器长度(L) Length(L)<br>mm                                 | 42   | 42  | 42  | 42  | 42   | 42  | 60  | 60  | 60 | 60 |
| 空载转速<br>No-load speed<br>r/min                           | 667  | 400 | 267 | 200 | 160  | 133 | 80  | 67  | 40 | 27 |
| 额定转速<br>Rated speed<br>r/min                             | 567  | 340 | 227 | 170 | 136  | 113 | 68  | 57  | 34 | 23 |
| 额定转矩<br>Rated torque<br>N.m                              | 0.86 | 1.3 | 1.9 | 2.6 | 3.2  | 3.9 | 5.8 | 7.0 | 11 | 16 |
| 最大瞬间允许负载<br>Max. permissible load in a short time<br>N.m | 5.0  | 10  | 10  | 10  | 10   | 10  | 20  | 20  | 40 | 40 |
| 转 向<br>Direction of rotation                             | CCW  | CW  | CW  | CW  | CW   | CW  | CCW | CCW | CW | CW |

配置80ZY115-2430直流电机 (80ZY115-2430 DC Motor)

| 减速比<br>Reduction ratio                                   | 3    | 5   | 7.5 | 10  | 12.5 | 15  | 25  | 30  | 50 | 75 |
|--|------|-----|-----|-----|------|-----|-----|-----|----|----|
| 减速级数<br>Number of gear trains                            | 1    | 2   | 2   | 2   | 2    | 2   | 3   | 3   | 4  | 4  |
| 减速器长度(L) Length(L)<br>mm                                 | 42   | 42  | 42  | 42  | 42   | 42  | 60  | 60  | 60 | 60 |
| 空载转速<br>No-load speed<br>r/min                           | 1000 | 600 | 400 | 300 | 240  | 200 | 120 | 100 | 60 | 40 |
| 额定转速<br>Rated speed<br>r/min                             | 867  | 520 | 347 | 260 | 208  | 173 | 104 | 87  | 52 | 35 |
| 额定转矩<br>Rated torque<br>N.m                              | 1.2  | 1.8 | 2.7 | 3.6 | 4.5  | 5.3 | 8.0 | 9.6 | 15 | 17 |
| 最大瞬间允许负载<br>Max. permissible load in a short time<br>N.m | 5.0  | 10  | 10  | 10  | 10   | 10  | 20  | 20  | 40 | 40 |
| 转 向<br>Direction of rotation                             | CCW  | CW  | CW  | CW  | CW   | CW  | CCW | CCW | CW | CW |